

Signs Your Garbage Disposal Needs Repair

1. It's Making Unusual or Loud Noises

Garbage disposals aren't exactly quiet, but you probably know what yours typically sounds like. So, when it starts making new, loud or grinding noises, that's a red flag. If the disposal is still running, you might be tempted to ignore the sound. But those grinding or rattling noises could be a warning that something is about to break.



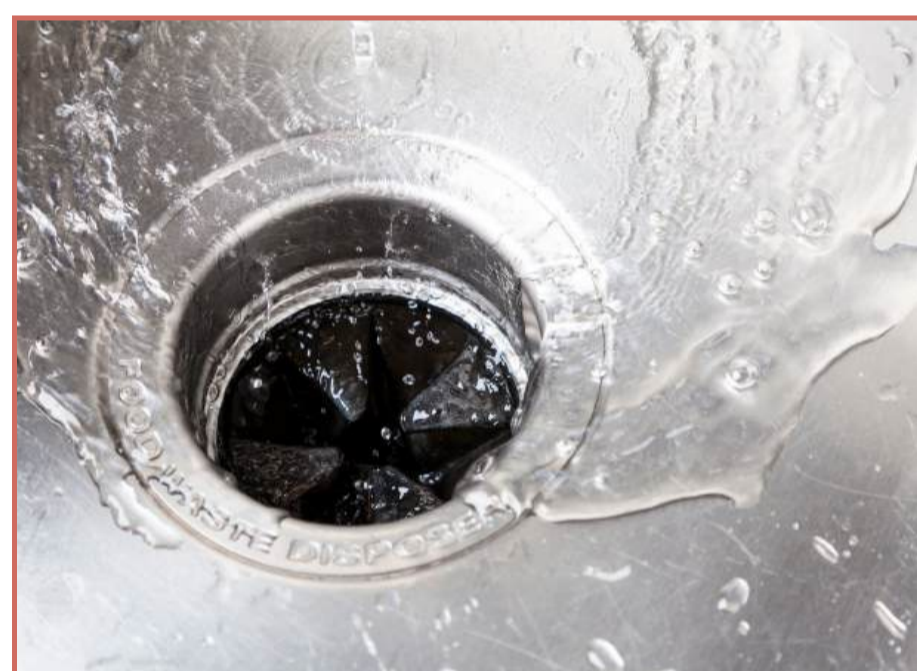
2. There's a Persistent Odor That Won't Go Away

A good cleaning can sometimes resolve foul smells from the disposal area. Ice cubes, baking soda, vinegar and lemon peels are popular DIY deodorizing tricks. But if the smell persists despite your best efforts, it could be more than just old food particles.



3. It Takes Too Long to Break Down Food

A disposal that struggles to grind food effectively or takes much longer than usual to get the job done may be dulling or clogged. Over time, the disposal's blades can wear down, especially if you've been disposing of fibrous vegetables or other tough foods that stress the system.



4. It's Leaking from the Bottom or Side

A leak from your garbage disposal can appear as a puddle under the sink or water staining the cabinet floor. It's easy to mistake this for a plumbing issue with your faucet or P-trap, but worn-out seals, gaskets, or cracks in the housing often cause leaks from the disposal itself.

5. It Frequently Jams

Garbage disposals are designed to handle a decent amount of food waste, but frequent jams indicate something's wrong. If you find yourself hitting the reset button more than you used to or have to unjam the blades manually, your disposal might be on its last leg.



6. You're Constantly Resetting the Unit

The reset button is there to help you recover from occasional overloads or jams, but it shouldn't be part of your regular kitchen routine. If you're resetting the unit more than once every few weeks, it could be a sign of electrical issues, overheating or internal motor problems.

7. It's Not Turning On at All

When your disposal won't start—no noise, no hum, nothing. First, ensure it's plugged in and your circuit breaker hasn't tripped. If everything looks normal, but the disposal is still unresponsive, the issue may be more significant.



Presented by:

onehomesolution.com

